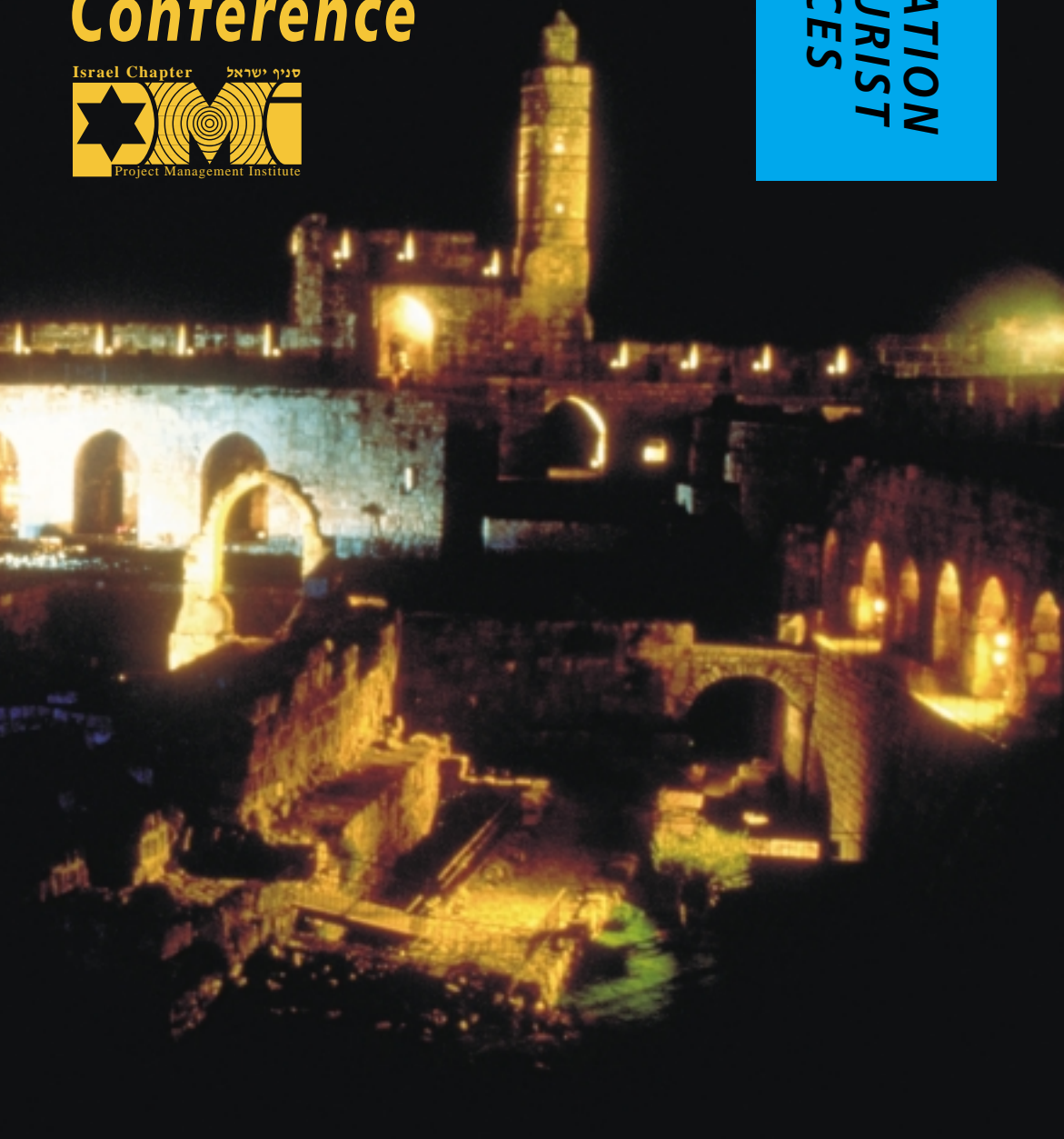


The 3rd European Project Management Conference



REGISTRATION
AND TOURIST
SERVICES



Renaissance Jerusalem Hotel
June 11-16, 2000

REGISTRATION

All participants and lecturers attending the Conference must register!

Conference Fees

	UP TO April 1, 2000	FROM April 2, 2000
Participant	US\$ 485	US\$ 570
Participant (PMI Member*)	US\$ 440	US\$ 515
Presenter** (Oral or Poster)	US\$ 270	US\$ 570 (or US\$ 515 if PMI Member)
Workshop (rate per day)	US\$ 170	US\$ 190
Accompanying Person	US\$ 180	US\$ 200
Tel Aviv-Jaffa Night Tour and Dinner	US\$ 65	US\$ 65

* Upon presentation of membership credentials. ** One per paper

Fees for Participants include:

♦ Attendance at the Conference Scientific Program ♦ CD including full papers presented ♦ Program and abstract book ♦ Conference kit ♦ Refreshments and 2 Lunchs ♦ Social Events (unless listed as optional)

Fees for Workshop include:

♦ Participation in workshop for one day ♦ Refreshments and Lunch ♦ Hand out material.

Fees for Accompanying Persons include:

♦ Social events and tours as per Accompanying Person's Program.

Preliminary Registration

Please complete the enclosed registration form and send it together with your payment to the conference secretariat. Payments can be made by bank draft or bank transfer to Account #142-47233, Bank Hapoalim, Branch 554, Namir Square, Tel Aviv, by Eurocheque (in the currency of the issuing country), by Travelers Cheques or by credit cards (Visa/Mastercard/Diners/American Express only). ***We wish to remind you that only papers submitted by fully registered participants will be included in the Conference Proceedings and program.***

Cancellation Policy

Refund of registration fees will be made (less US \$80 handling fee), if notification is received by fax or e-mail as follows:

Up to April 30, 2000 - full refund
 Between May 1 and May 30, 2000 - 50% refund
 From May 31, 2000 - no refund

TRAVEL, TOURS AND ACCOMMODATION

The Organizing Committee has appointed **Ortra Ltd.**, a registered travel agent, as the official Organizer and Travel Agent for the Conference. Rooms have been reserved in two wings of the Renaissance Jerusalem Hotel at special reduced rates. Double and single occupancy rooms will be available. All guestrooms are fully air-conditioned and include remote control color television and international direct-dial telephones. **Ortra Ltd.** will offer pre- and post-Conference tours. Participants will be invited to make additional reservations for tourist services in Israel as desired, such as hotel extensions, regular tours, private car tours, car rentals, touring in limousines with driver/guide, desert trips, Jordan tours, etc.

Airport Transfers

Participants booked on the Conference Package who have notified the Secretariat of their arrival details will be met at the airport by Ortra Ltd. representatives at the "Tour Bus" counter, located in the Arrival Hall (after customs). Limousine transfers can be arranged by Ortra Ltd. upon request (US \$68 per car) for participants not registered with the Conference Package.

I. DAILY ACCOMMODATION

Renaissance Jerusalem Hotel

	*Per person in a double room	Per person in a single room
Renaissance Wing	US\$ 79	US\$ 132
Royal Wing	US\$ 66	US\$ 107

Rates include:

- ♦ One night accommodation with Israeli buffet breakfast and service charge.

II. CONFERENCE PACKAGE

(Sunday, June 11 – Friday, June 16, 2000)

Rates:

Renaissance Jerusalem Hotel

	*Per person in a double room	Per person in a single room
Renaissance Wing	US\$ 425	US\$ 722
Royal Wing	US\$ 360	US\$ 597

Rates include:

- ♦ Arrival Transfer from Ben Gurion Airport to the Renaissance Hotel in Jerusalem (on Sunday, June 11, 2000 only).
- ♦ 5 nights accommodation including Israeli buffet breakfast and service charge.

III. PRE-CONFERENCE TOUR TO JORDAN

(Wednesday, June 7 - Sunday, June 11, 2000)

Wednesday, June 7, 2000

Arrival transfer from Ben Gurion Airport to the Metropolitan hotel, Tel Aviv. Overnight: Metropolitan Hotel, Tel Aviv, or similar.

Thursday, June 8, 2000

Drive from Tel Aviv to Allenby Bridge. After crossing the border, drive to Madabbah and Mount Nebo. Continue to Amman. Overnight in Amman in a first class hotel.

Friday, June 9, 2000

Drive south to Petra. Ride by horse through Siq Canyon to the ancient capital of the Nabateans -El Khazneh, Field of Tombs, Obelisks and al Madabbah. Drive back to Amman. Overnight in Amman in a first class hotel.

Saturday, June 10, 2000

Drive to Jerash to visit the ancient Roman City. Return to Amman. The remainder of the day at leisure. Overnight in Amman in a first class hotel.

Sunday, June 11, 2000

Leave Amman for Allenby Bridge. Cross back into Israel and drive to Jerusalem to the Renaissance Hotel for Conference Registration.

Rates:

Per person in a double room*	US\$ 542
Per person in a single room	US\$ 703

Rates Include:

- ♦ Arrival transfer (Wednesday, June 7,2000 only).
- ♦ 4 nights accommodation including breakfast and service charge.
- ♦ 3 days touring in an air-conditioned bus with licensed guide.

Rates do not include:

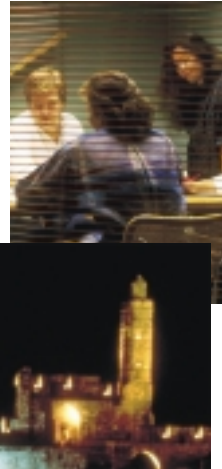
- ♦ Cost of visa to Jordan.
- ♦ Israeli and Jordanian border taxes.
- ♦ Tips and personal expenses.

Visas

Visas to Jordan are arranged on a group basis. You are requested to advise us to the following information in order to enable us to make arrangements:

- ♦ Full name as it appears on your passport
- ♦ Nationality and passport number
- ♦ Issue and expiration dates (Passport must be valid for at least six months)
- ♦ Date and place of birth

The arrangements do not include payment for the visa, which is made on an individual basis directly with the Jordanian border authorities. The cost of visa differs for each country of origin.



IV. POST-CONFERENCE ONE DAY TOUR: JERUSALEM AND BETHLEHEM

Friday, June 16, 2000

Departure for a full day tour of the old city of Jerusalem, including the Wailing Wall, Via Dolorosa, Church of the Holy Sepulchre, Bazaar, Jaffa Gate and proceed to Bethlehem for visit of the church of Nativity and Grotto. Return for overnight to Renaissance Jerusalem Hotel.

Rates

Renaissance Jerusalem Hotel

	*Per person in a double room	Per person in a single room
Renaissance Wing	US\$ 124	US\$ 177
Royal Wing	US\$ 111	US\$ 152

Rates Include:

- ♦ 1 day of touring in air-conditioned bus with licensed English speaking guide.
- ♦ 1 night accommodation including breakfast and service charge (June 16-17, 2000).

Rates do not include:

- ♦ Tips and personal expenses.

V. POST-CONFERENCE TWO-DAY TOUR: JERUSALEM AND THE DEAD SEA

(Friday, June 16 -Saturday, June 17, 2000)

Friday, June 16, 2000

As per Post Conference Tour IV

Saturday, June 17, 2000

Departure from Jerusalem for a full day tour of the Judean Desert and the Dead Sea, the lowest point of earth; the ancient Herodian fortress of Massada and the delightful Ein Gedi Spa. Highlights include Judean Desert, Kalia, Massada and a swim at the Dead Sea. Return for overnight to Renaissance Jerusalem Hotel.

Rates

Renaissance Jerusalem Hotel

	*Per person in a double room	Per person in a single room
Renaissance Wing	US\$ 272	US\$ 378
Royal Wing	US\$ 246	US\$ 328



Rates Include:

- ♦ 2 days of touring in air-conditioned bus with licensed English speaking guide.
- ♦ 2 nights accommodation including breakfast and service charge (June 16-18, 2000).

Rates do not include:

- ♦ Tips and personal expenses.

VI. POST-CONFERENCE FOUR-DAY TOUR TO JERUSALEM, BETHLEHEM, DEAD SEA AND GALILEE

(Friday, June 16 – Tuesday, June 20, 2000)

Friday, June 16, 2000

As per Post-Tour V

Saturday, June 17, 2000

As per Post-Tour V

Sunday, June 18, 2000

Full Day tour to the North of Israel, via the Jordan Valley, visiting sites of historical and biblical importance such as Beit Shean (Schtytopolis) excavations, Capernaum, and a boat ride on the sea of Galilee. Dinner and overnight at a Kibbutz Guesthouse in the area.

Monday, June 19, 2000

Tour to Golan Heights, including visit of Banias, Birkat Ram, view of Quneitra, visit New City and Museum at Qatzrin, Cana of the Galilee and Church of the Annunciation in Nazareth. Bus drive to Tel Aviv and overnight at the Metropolitan Hotel, Tel Aviv, or similar.

Tuesday, June 20, 2000

Departures on your own

Rates

Renaissance Jerusalem Hotel

	*Per person in a double room	Per person in a single room
Renaissance Wing	US\$ 526	US\$ 701
Royal Wing	US\$ 501	US\$ 651

Rates include:

- ♦ 4 days of touring in an air-conditioned bus with licensed English speaking guide.
- ♦ 4 nights accommodation including breakfast and service charge (June 16-20, 2000).
- ♦ 1 dinner.

Rates do not include:

- ♦ Tips and Personal expenses.

***Important Note:** The number of single rooms is limited. Participants requesting to share a double room should send their tourist services forms together. Ortra will not accept reservations for sharing double rooms unless the forms are received together.

REQUEST FOR TOURIST SERVICES

Kindly make your requests on the attached "Tourist Services Form" and return it with payment to Ortra Ltd. Payment to Ortra Ltd. can be made by bank draft or bank transfer to Account #142-47233, Bank Hapoalim, Branch 554, Namir Square, Tel Aviv, by Eurocheque (in the currency of the issuing country), by Travelers cheques or by credit card (VISA/Mastercard/Diners/American Express only).

TOURIST SERVICES CANCELLATION POLICY

In case of cancellation, payments will be refunded in full, except for an \$80 cancellation fee plus bank charges, if notification reaches Ortra Ltd. by May 31, 2000. Afterwards a \$100 cancellation fee plus one night hotel charge and bank charges will be retained.

TRAVEL, TOURS AND ACCOMMODATION

ORTRA LTD

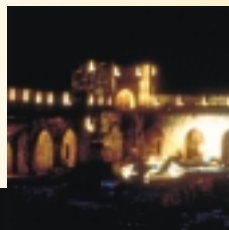
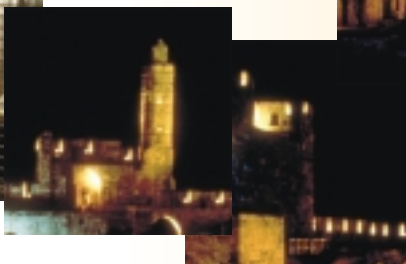
1 Nirim Street, P.O.Box 9352
Tel Aviv 61092, Israel
Tel: 972-3-6384444 Fax: 972-3-6384455
E-mail: pmi@ortra.co.il
Web site: <http://www.ortra.com/pmi>

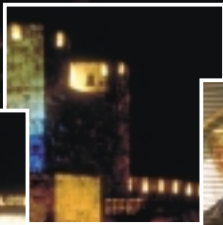
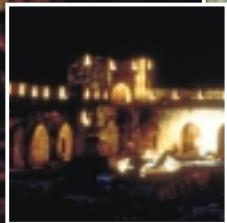
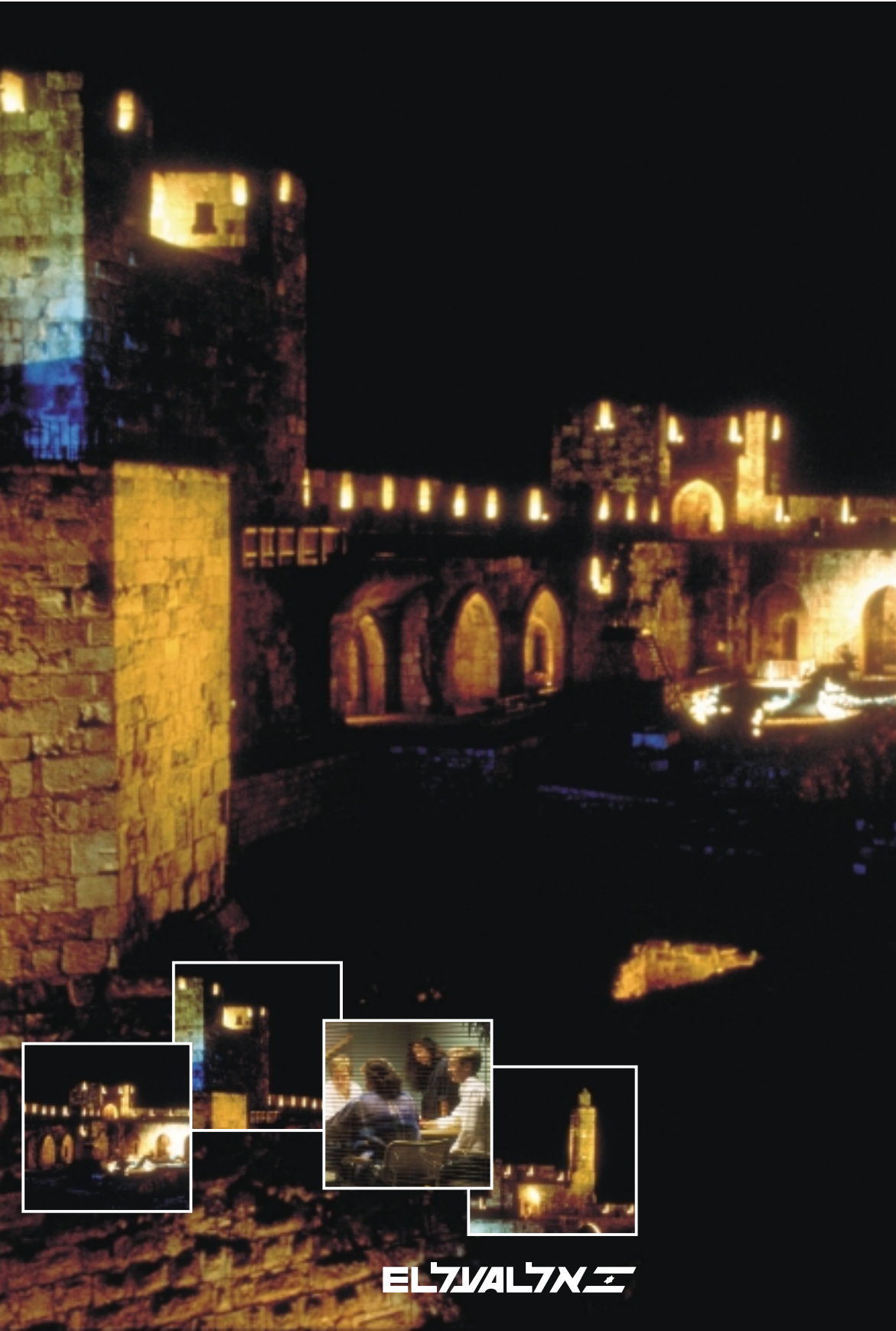


OFFICIAL CARRIER

ELAL Israeli Airlines

EL AL





EL VALTX