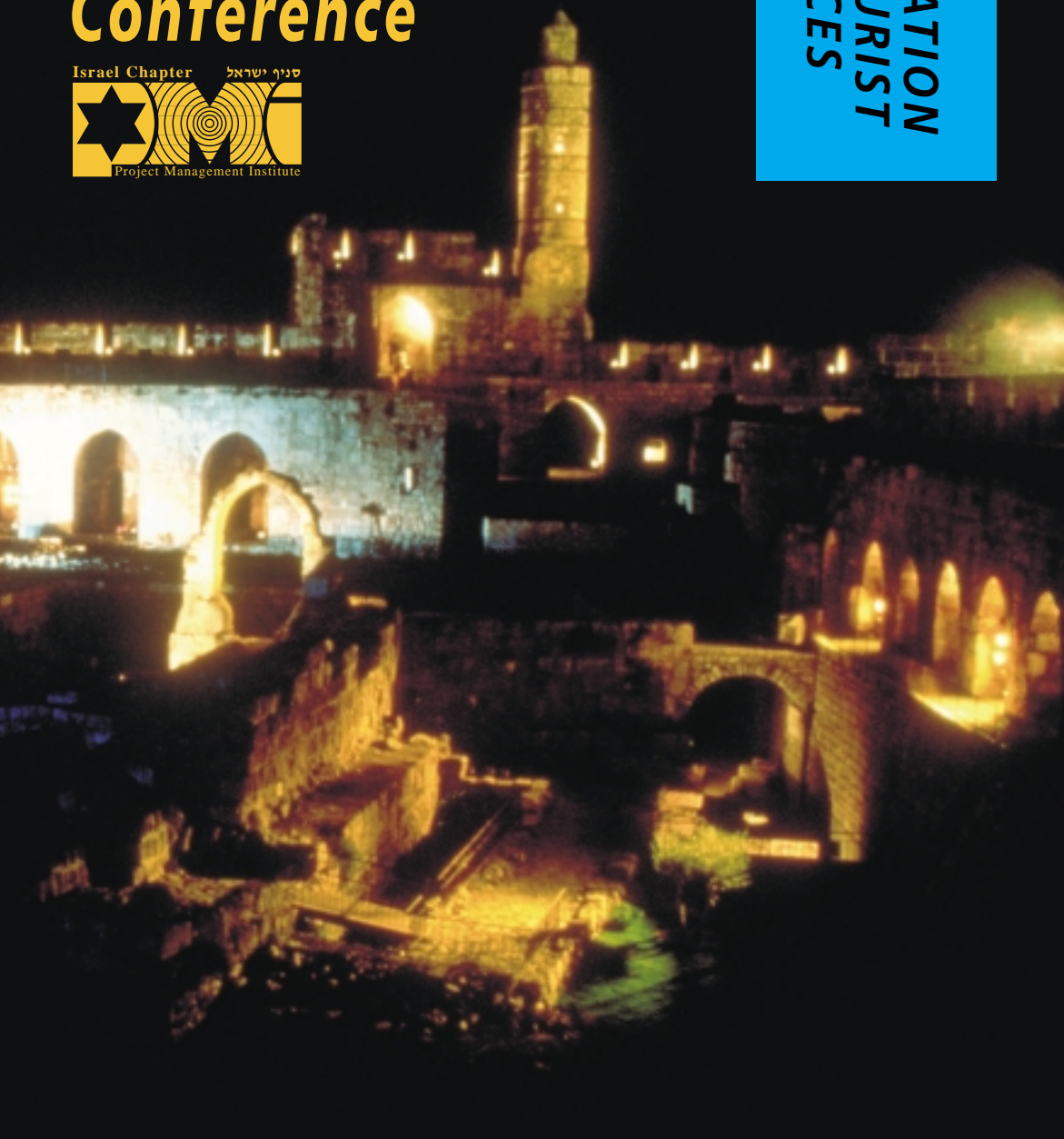


# *The 3rd European Project Management Conference*



REGISTRATION  
AND TOURIST  
SERVICES



---

**Renaissance Jerusalem Hotel  
June 11-16, 2000**



## **TRAVEL, TOURS AND ACCOMMODATION**

The Organizing Committee has appointed **Ortra Ltd.**, a registered travel agent, as the official Organizer and Travel Agent for the Conference. Rooms have been reserved in two wings of the Renaissance Jerusalem Hotel at special reduced rates. Double and single occupancy rooms will be available. All guestrooms are fully air-conditioned and include remote control color television and international direct-dial telephones. **Ortra Ltd.** will offer pre- and post-Conference tours. Participants will be invited to make additional reservations for tourist services in Israel as desired, such as hotel extensions, regular tours, private car tours, car rentals, touring in limousines with driver/guide, desert trips, Jordan tours, etc.

### **Airport Transfers**

Participants booked on the Conference Package who have notified the Secretariat of their arrival details will be met at the airport by Ortra Ltd. representatives at the "Tour Bus" counter, located in the Arrival Hall (after customs). Limousine transfers can be arranged by Ortra Ltd. upon request (US \$68 per car) for participants not registered with the Conference Package.

### **I. DAILY ACCOMMODATION**

#### **Renaissance Jerusalem Hotel**

	<b>*Per person in a double room</b>	<b>Per person in a single room</b>
Renaissance Wing	US\$ 79	US\$ 132
Royal Wing	US\$ 66	US\$ 107

#### **Rates include:**

- ♦ One night accommodation with Israeli buffet breakfast and service charge.

### **II. CONFERENCE PACKAGE**

*(Sunday, June 11 – Friday, June 16, 2000)*

#### **Rates:**

#### **Renaissance Jerusalem Hotel**

	<b>*Per person in a double room</b>	<b>Per person in a single room</b>
Renaissance Wing	US\$ 425	US\$ 722
Royal Wing	US\$ 360	US\$ 597

#### **Rates include:**

- ♦ Arrival Transfer from Ben Gurion Airport to the Renaissance Hotel in Jerusalem (on Sunday, June 11, 2000 only).
- ♦ 5 nights accommodation including Israeli buffet breakfast and service charge.

### **III. PRE-CONFERENCE TOUR TO JORDAN**

*(Wednesday, June 7 - Sunday, June 11, 2000)*

#### ***Wednesday, June 7, 2000***

Arrival transfer from Ben Gurion Airport to the Metropolitan hotel, Tel Aviv. Overnight: Metropolitan Hotel, Tel Aviv, or similar.

#### ***Thursday, June 8, 2000***

Drive from Tel Aviv to Allenby Bridge. After crossing the border, drive to Madabbah and Mount Nebo. Continue to Amman. Overnight in Amman in a first class hotel.

#### ***Friday, June 9, 2000***

Drive south to Petra. Ride by horse through Siq Canyon to the ancient capital of the Nabateans -El Khazneh, Field of Tombs, Obelisks and al Madabbah. Drive back to Amman. Overnight in Amman in a first class hotel.

#### ***Saturday, June 10, 2000***

Drive to Jerash to visit the ancient Roman City. Return to Amman. The remainder of the day at leisure. Overnight in Amman in a first class hotel.

#### ***Sunday, June 11, 2000***

Leave Amman for Allenby Bridge. Cross back into Israel and drive to Jerusalem to the Renaissance Hotel for Conference Registration.

#### **Rates:**

Per person in a double room*	US\$ 542
Per person in a single room	US\$ 703

#### **Rates Include:**

- ♦ Arrival transfer (Wednesday, June 7,2000 only).
- ♦ 4 nights accommodation including breakfast and service charge.
- ♦ 3 days touring in an air-conditioned bus with licensed guide.

#### **Rates do not include:**

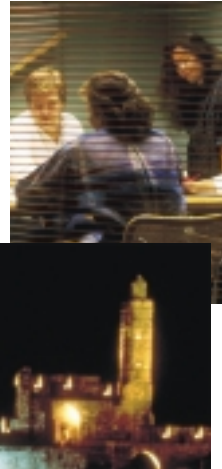
- ♦ Cost of visa to Jordan.
- ♦ Israeli and Jordanian border taxes.
- ♦ Tips and personal expenses.

#### **Visas**

Visas to Jordan are arranged on a group basis. You are requested to advise us to the following information in order to enable us to make arrangements:

- ♦ Full name as it appears on your passport
- ♦ Nationality and passport number
- ♦ Issue and expiration dates (Passport must be valid for at least six months)
- ♦ Date and place of birth

The arrangements do not include payment for the visa, which is made on an individual basis directly with the Jordanian border authorities. The cost of visa differs for each country of origin.



#### **IV. POST-CONFERENCE ONE DAY TOUR: JERUSALEM AND BETHLEHEM**

*Friday, June 16, 2000*

Departure for a full day tour of the old city of Jerusalem, including the Wailing Wall, Via Dolorosa, Church of the Holy Sepulchre, Bazaar, Jaffa Gate and proceed to Bethlehem for visit of the church of Nativity and Grotto. Return for overnight to Renaissance Jerusalem Hotel.

##### **Rates**

###### **Renaissance Jerusalem Hotel**

	<b>*Per person in a double room</b>	<b>Per person in a single room</b>
Renaissance Wing	US\$ 124	US\$ 177
Royal Wing	US\$ 111	US\$ 152

##### **Rates Include:**

- ♦ 1 day of touring in air-conditioned bus with licensed English speaking guide.
- ♦ 1 night accommodation including breakfast and service charge (June 16-17, 2000).

##### **Rates do not include:**

- ♦ Tips and personal expenses.

#### **V. POST-CONFERENCE TWO-DAY TOUR: JERUSALEM AND THE DEAD SEA**

*(Friday, June 16 -Saturday, June 17, 2000)*

*Friday, June 16, 2000*

As per Post Conference Tour IV

*Saturday, June 17, 2000*

Departure from Jerusalem for a full day tour of the Judean Desert and the Dead Sea, the lowest point of earth; the ancient Herodian fortress of Massada and the delightful Ein Gedi Spa. Highlights include Judean Desert, Kalia, Massada and a swim at the Dead Sea. Return for overnight to Renaissance Jerusalem Hotel.

##### **Rates**

###### **Renaissance Jerusalem Hotel**

	<b>*Per person in a double room</b>	<b>Per person in a single room</b>
Renaissance Wing	US\$ 272	US\$ 378
Royal Wing	US\$ 246	US\$ 328



**Rates Include:**

- ♦ 2 days of touring in air-conditioned bus with licensed English speaking guide.
- ♦ 2 nights accommodation including breakfast and service charge (June 16-18, 2000).

**Rates do not include:**

- ♦ Tips and personal expenses.

**VI. POST-CONFERENCE FOUR-DAY TOUR TO JERUSALEM, BETHLEHEM, DEAD SEA AND GALILEE**

*(Friday, June 16 – Tuesday, June 20, 2000)*

**Friday, June 16, 2000**

As per Post-Tour V

**Saturday, June 17, 2000**

As per Post-Tour V

**Sunday, June 18, 2000**

Full Day tour to the North of Israel, via the Jordan Valley, visiting sites of historical and biblical importance such as Beit Shean (Schtytopolis) excavations, Capernaum, and a boat ride on the sea of Galilee. Dinner and overnight at a Kibbutz Guesthouse in the area.

**Monday, June 19, 2000**

Tour to Golan Heights, including visit of Banias, Birkat Ram, view of Quneitra, visit New City and Museum at Qatzrin, Cana of the Galilee and Church of the Annunciation in Nazareth. Bus drive to Tel Aviv and overnight at the Metropolitan Hotel, Tel Aviv, or similar.

**Tuesday, June 20, 2000**

Departures on your own

**Rates**

**Renaissance Jerusalem Hotel**

	<b>*Per person in a double room</b>	<b>Per person in a single room</b>
Renaissance Wing	US\$ 526	US\$ 701
Royal Wing	US\$ 501	US\$ 651

**Rates include:**

- ♦ 4 days of touring in an air-conditioned bus with licensed English speaking guide.
- ♦ 4 nights accommodation including breakfast and service charge (June 16-20, 2000).
- ♦ 1 dinner.

**Rates do not include:**

- ♦ Tips and Personal expenses.

**\*Important Note:** The number of single rooms is limited. Participants requesting to share a double room should send their tourist services forms together. Ortra will not accept reservations for sharing double rooms unless the forms are received together.

## **REQUEST FOR TOURIST SERVICES**

Kindly make your requests on the attached "Tourist Services Form" and return it with payment to Ortra Ltd. Payment to Ortra Ltd. can be made by bank draft or bank transfer to Account #142-47233, Bank Hapoalim, Branch 554, Namir Square, Tel Aviv, by Eurocheque (in the currency of the issuing country), by Travelers cheques or by credit card (VISA/Mastercard/Diners/American Express only).

## **TOURIST SERVICES CANCELLATION POLICY**

In case of cancellation, payments will be refunded in full, except for an \$80 cancellation fee plus bank charges, if notification reaches Ortra Ltd. by May 31, 2000. Afterwards a \$100 cancellation fee plus one night hotel charge and bank charges will be retained.

## **TRAVEL, TOURS AND ACCOMMODATION**

### **ORTRA LTD**

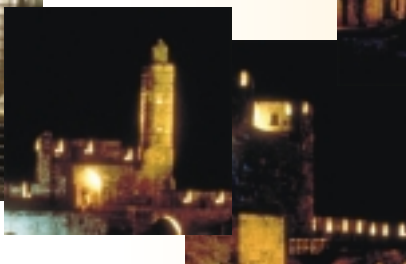
1 Nirim Street, P.O.Box 9352  
Tel Aviv 61092, Israel  
Tel: 972-3-6384444 Fax: 972-3-6384455  
E-mail: [pmi@ortra.co.il](mailto:pmi@ortra.co.il)  
Web site: <http://www.ortra.com/pmi>

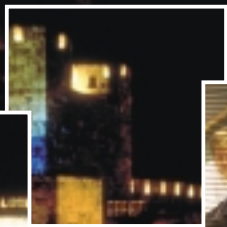
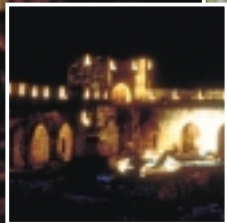
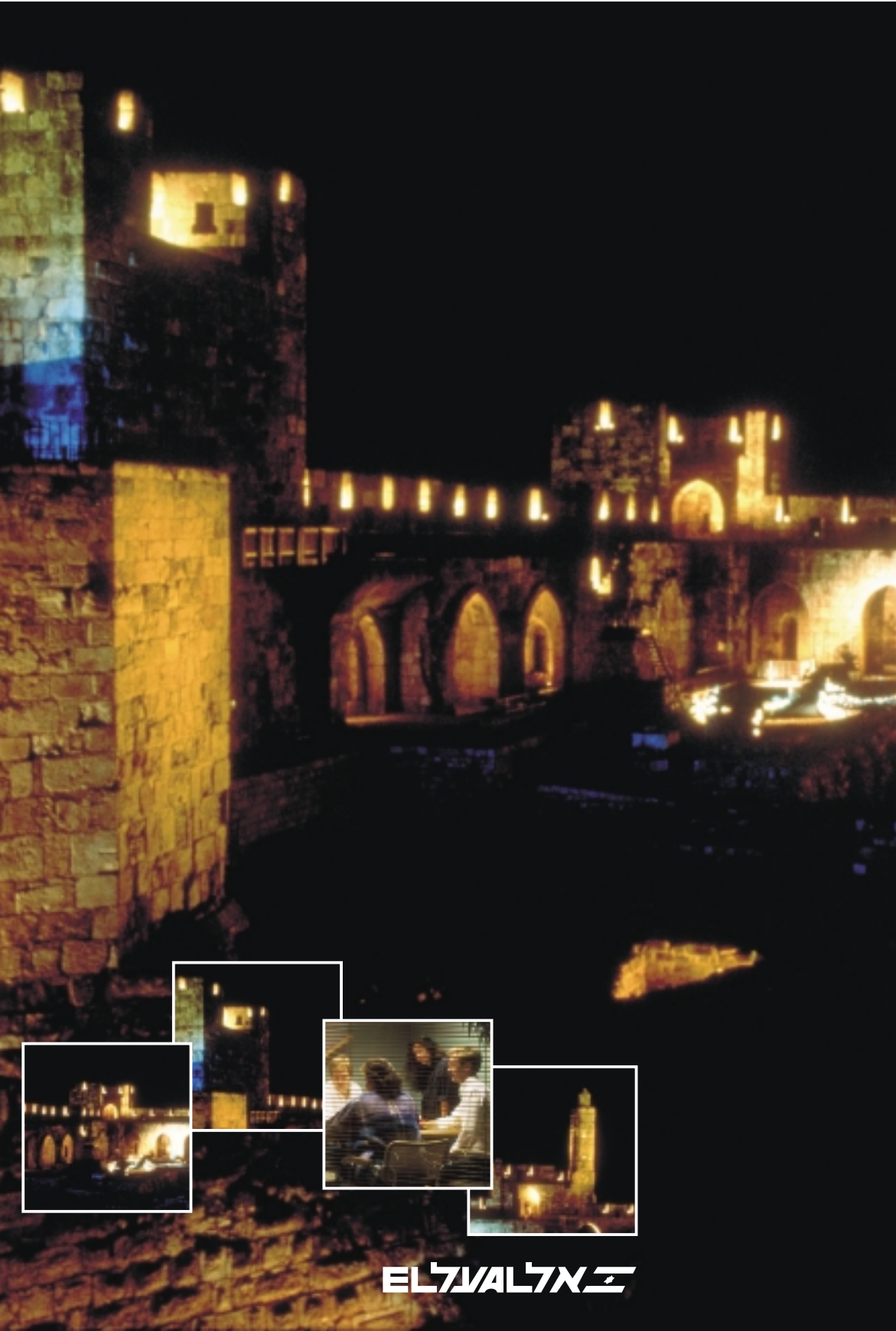


## **OFFICIAL CARRIER**

**ELAL Israeli Airlines**

**EL AL**





**ELVALTX**